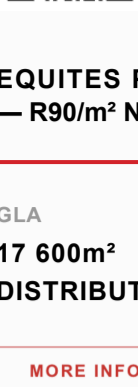


<h1 style="font-size: 48px; margin: 0;">1</h1> <p style="margin: 0;">WESTERN CAPE Vacancies 1</p>	<h1 style="font-size: 48px; margin: 0;">17</h1> <p style="margin: 0;">GAUTENG Development Opportunities 14 Speculative Builds 1 Vacancies 2</p>
---	---

WESTERN CAPE

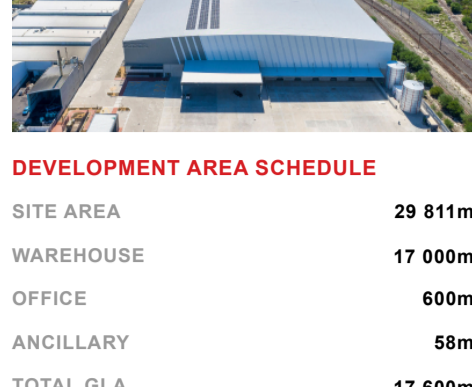
AVAILABLE IMMEDIATELY



EQUITES PAROW DC
— R90/m² NET

GLA
17 600m²
DISTRIBUTION CENTRE

[MORE INFO](#)
[CONTACT US](#)

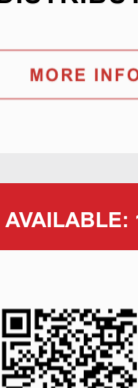


DEVELOPMENT AREA SCHEDULE

SITE AREA	29 811m ²
WAREHOUSE	17 000m ²
OFFICE	600m ²
ANCILLARY	58m ²
TOTAL GLA	17 600m ²
CANOPY	976m ²
YARD	5 900m ²

GAUTENG

AVAILABLE: 1 JANUARY 2025



EQUITES WATERFALL 8B
— R100/m² NET

GLA
9 162m²
DISTRIBUTION CENTRE

[MORE INFO](#)
[CONTACT US](#)



AREA BREAKDOWN

WAREHOUSE	6 482m ²
PARKING BAYS	211
OFFICE	2 680m ²

AVAILABLE: 1 JANUARY 2025



EQUITES WATERFALL 8B
— R160/m² GROSS

GLA
2 002m²
OFFICE SPACE

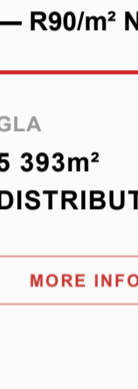
[MORE INFO](#)
[CONTACT US](#)



AREA BREAKDOWN

OFFICE	2 002m ²
PARKING BAYS	111

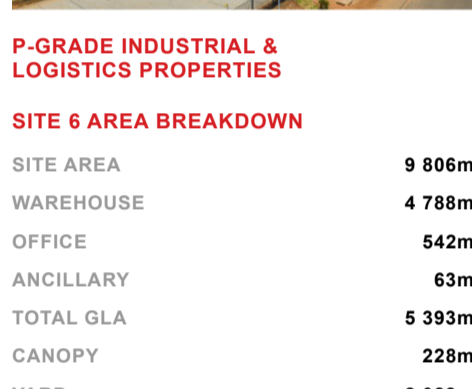
DEVELOPMENT OPPORTUNITY



EQUITES PARK - MEADOWVIEW S5
— R95/m² NET

GLA
12 845m²
DISTRIBUTION CENTRE

[MORE INFO](#)
[CONTACT US](#)

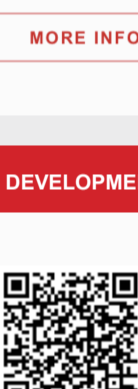


P-GRADE INDUSTRIAL & LOGISTICS PROPERTIES

SITE 5 AREA BREAKDOWN

SITE AREA	26 854m ²
WAREHOUSE	11 908m ²
OFFICE	862m ²
ANCILLARY	75m ²
TOTAL GLA	12 845m ²
CANOPY	1 944m ²
YARD	5 109m ²

AVAILABLE: 1 NOVEMBER 2024



EQUITES PARK - MEADOWVIEW S6
— R90/m² NET

GLA
5 393m²
DISTRIBUTION CENTRE

[MORE INFO](#)
[CONTACT US](#)



P-GRADE INDUSTRIAL & LOGISTICS PROPERTIES

SITE 6 AREA BREAKDOWN

SITE AREA	9 806m ²
WAREHOUSE	4 788m ²
OFFICE	542m ²
ANCILLARY	63m ²
TOTAL GLA	5 393m ²
CANOPY	228m ²
YARD	2 028m ²

AVAILABLE: JULY 2025



EQUITES PARK - RIVERFIELDS I
— R95/m² NET

GLA
24 238m²
SPECULATIVE BUILD

[MORE INFO](#)
[CONTACT US](#)



DEVELOPMENT AREA SCHEDULE

SITE AREA	47 222m ²
WAREHOUSE	23 417m ²
OFFICE	732m ²

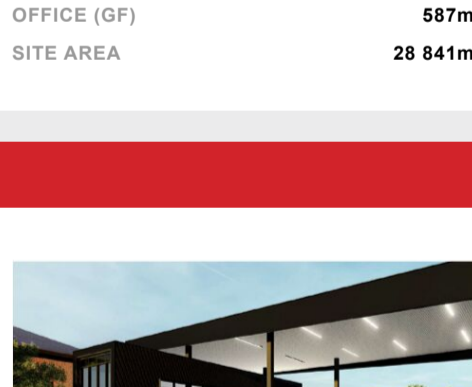
DEVELOPMENT OPPORTUNITY



EQUITES PARK - RIVERFIELDS III
— R95/m² NET

GLA
80 000m²
DEVELOPMENT OPPORTUNITY

[MORE INFO](#)
[CONTACT US](#)



P-GRADE LOGISTICS & INDUSTRIAL PROPERTIES

SITE AREA A

WAREHOUSE	25 600m ²
OFFICE (GF)	1 280m ²
SITE AREA	59 900m ²

SITE AREA B

WAREHOUSE	22 000m ²
OFFICE (GF)	1 100m ²
SITE AREA	39 810m ²

SITE AREA C

WAREHOUSE	28 000m ²
OFFICE (GF)	1 400m ²
SITE AREA	54 520m ²

AVAILABLE: 1 FEBRUARY 2025



EQUITES PARK - RIVERFIELDS IV
— R95/m² NET

GLA
+/- 130 000m²
DEVELOPMENT OPPORTUNITY

[MORE INFO](#)
[CONTACT US](#)



P-GRADE LOGISTICS & INDUSTRIAL PROPERTIES

SITE AREA A

WAREHOUSE	59 636m ²
OFFICE (GF)	1 030m ²
SITE AREA	98 433m ²

SITE AREA B

WAREHOUSE	40 414m ²
OFFICE (GF)	764m ²
SITE AREA	74 100m ²

SITE AREA C

WAREHOUSE	22 617m ²
OFFICE (GF)	522m ²
SITE AREA	51 653m ²

SITE AREA D

WAREHOUSE	10 863m ²
OFFICE (GF)	587m ²
SITE AREA	28 841m ²

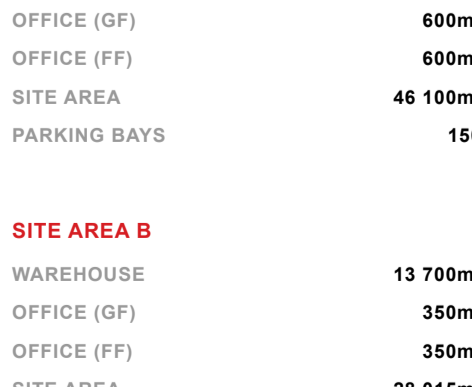
DEVELOPMENT OPPORTUNITY



EQUITES JET PARK
— R90/m² NET

GLA
20 000m²
DEVELOPMENT OPPORTUNITY

[MORE INFO](#)
[CONTACT US](#)



LOGISTICS PROPERTIES

OPTION 3

LAND AREA	18 339m ²
POTENTIAL GLA	8 500m ²

OPTION 5

LAND AREA	21 872m ²
POTENTIAL GLA	10 000m ²